

# Carryout Bag Ordinance

***Committee of the Whole***

***November 12, 2019***

# The plastics problem

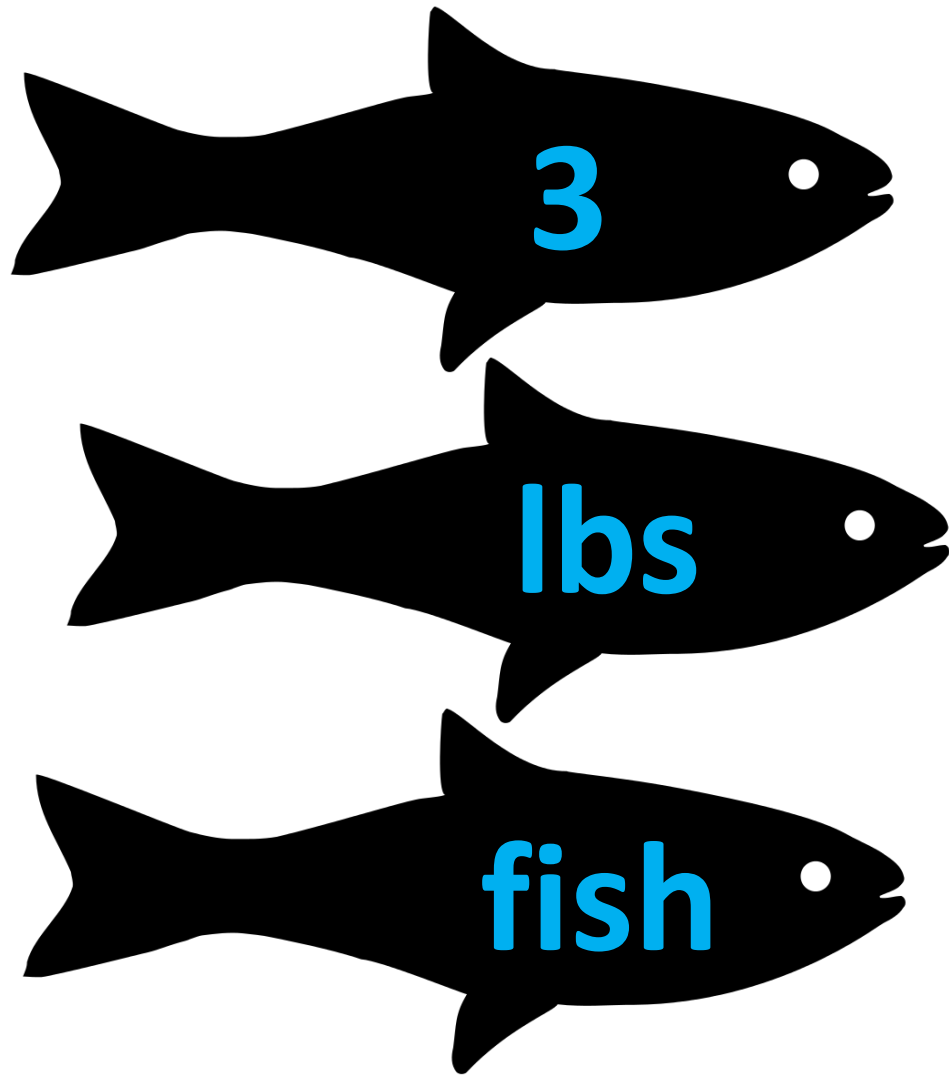


# By 2025:

# in our oceans



for

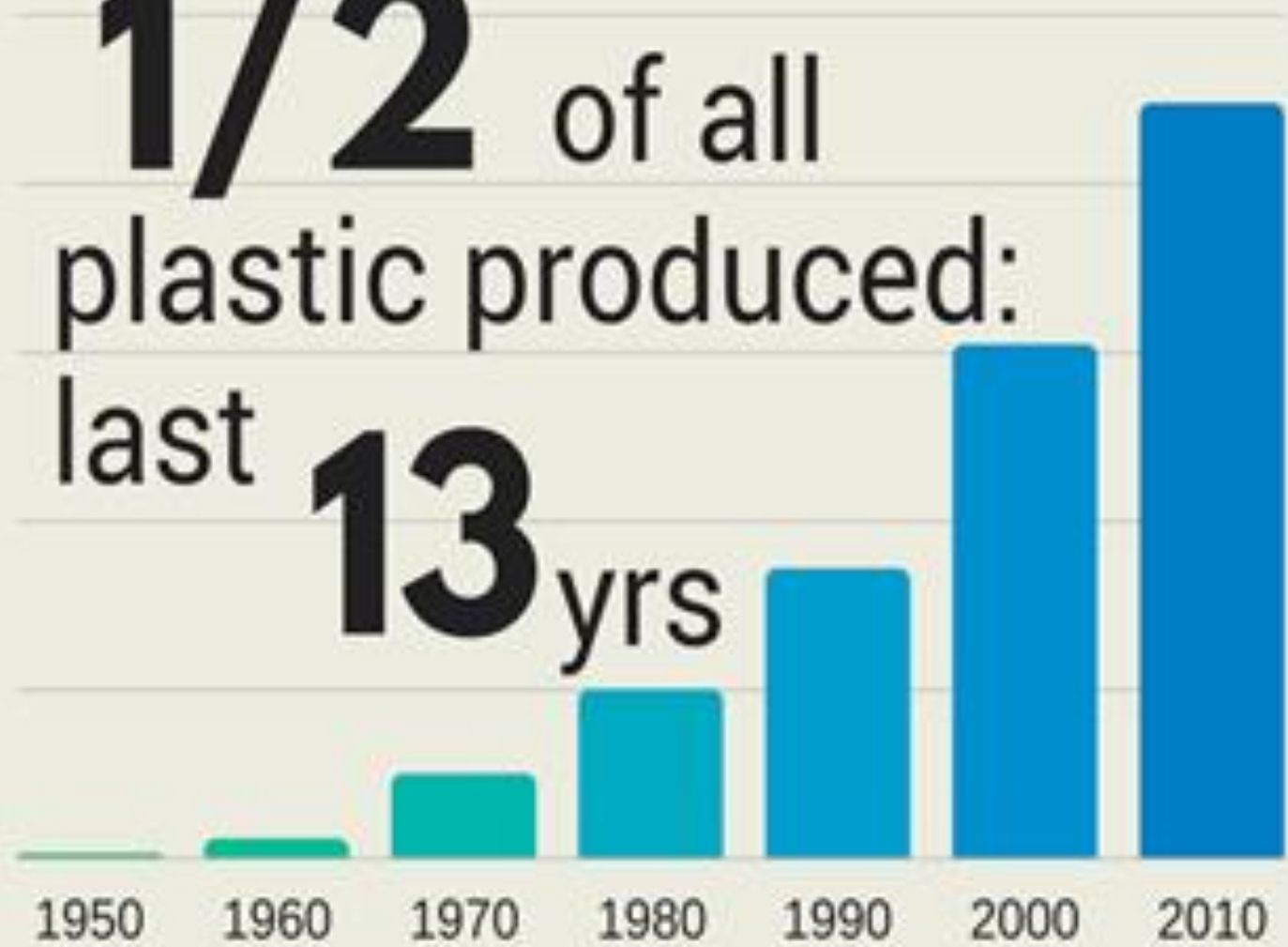


Global Production (Mt)

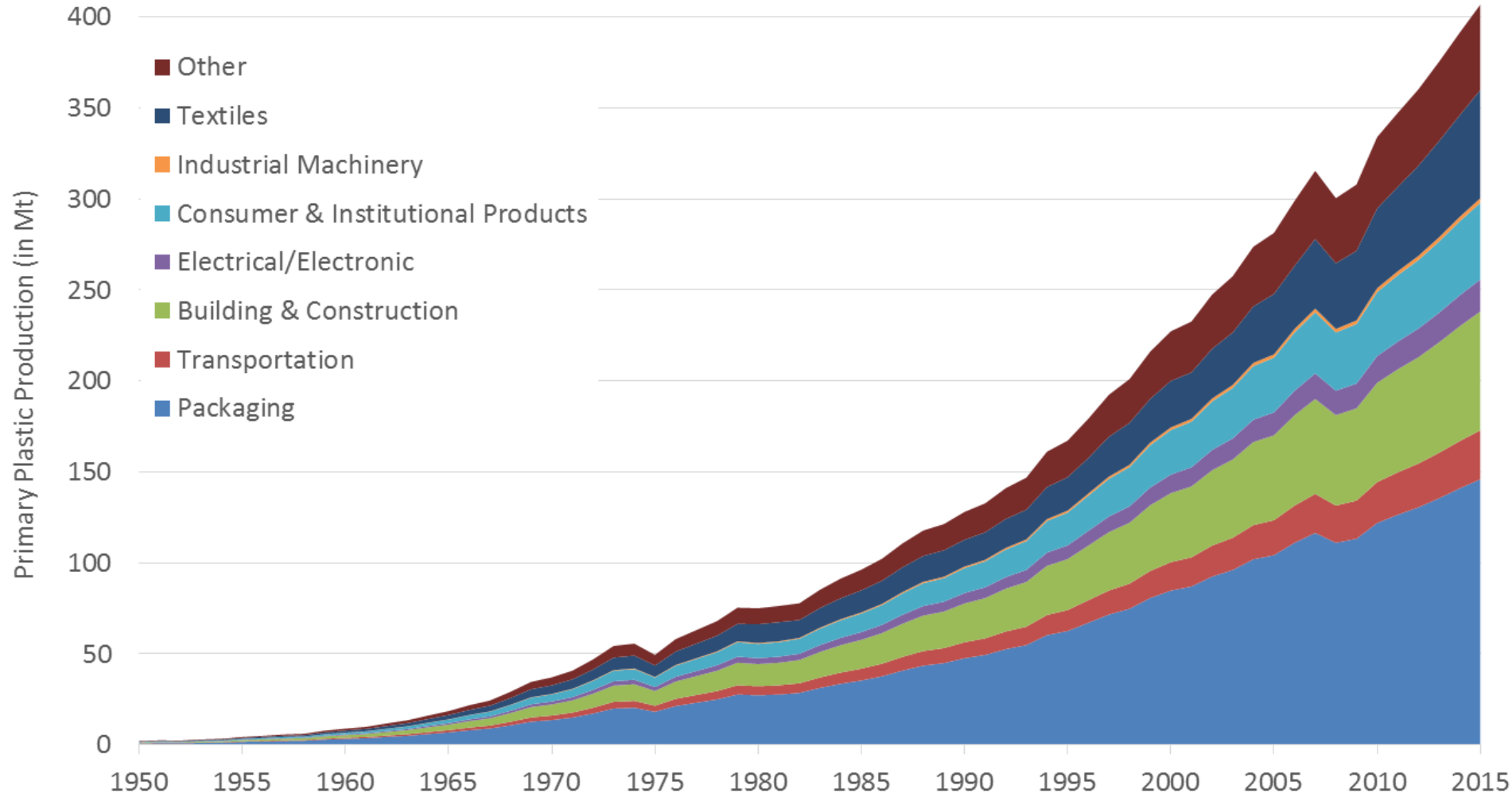
350  
280  
210  
140  
70  
0

**1/2** of all  
plastic produced:  
last **13** yrs

1950 1960 1970 1980 1990 2000 2010



# We Live in A Plastic Era



Geyer et. al (2017)



30%

plastics is used for packaging



**New plastic packaging keeps coming into the market**

# Plastics in the Salish Sea



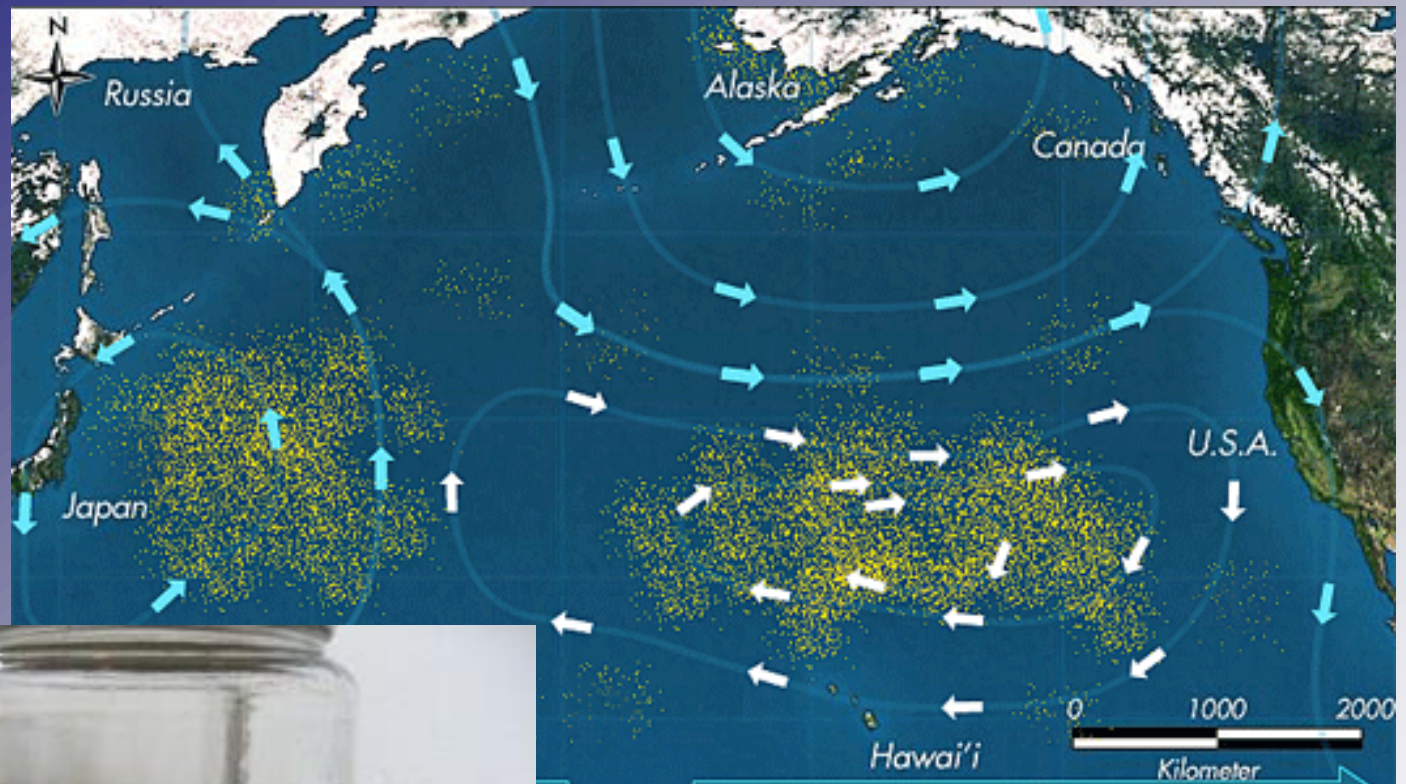


**Plastics don't decompose**  
*Instead, they break down into  
smaller and smaller bits*



*Algalita Marine Research Foundation*

# North Pacific Gyre Trash Patch



And end up in the  
world's ocean  
accumulating in  
the gyres!

# Plastic in the Food Chain

- Microplastics are found in every depth of the water column all around the world, even Antarctica!
- Plastic marine debris affects over 660 species
- Toxins from plastic bioaccumulate



[https://www.flickr.com/photos/andrea\\_pauline/4491635804/in/photostream/](https://www.flickr.com/photos/andrea_pauline/4491635804/in/photostream/)



<https://www.flickr.com/photos/usfwshq/8080507529>



## Gray whale that died on Alki Beach, Seattle, 2010

Timothy Quinn (May 18, 2010: An Environmental Overview of the Puget Sound Ecosystem

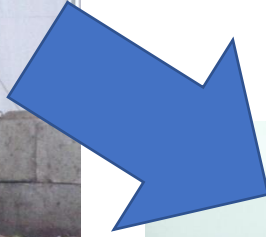


“...a surprising amount of human debris: including more than 20 plastic bags, small towels, surgical gloves, sweat pants, plastic pieces, duct tape, and....”

# Community



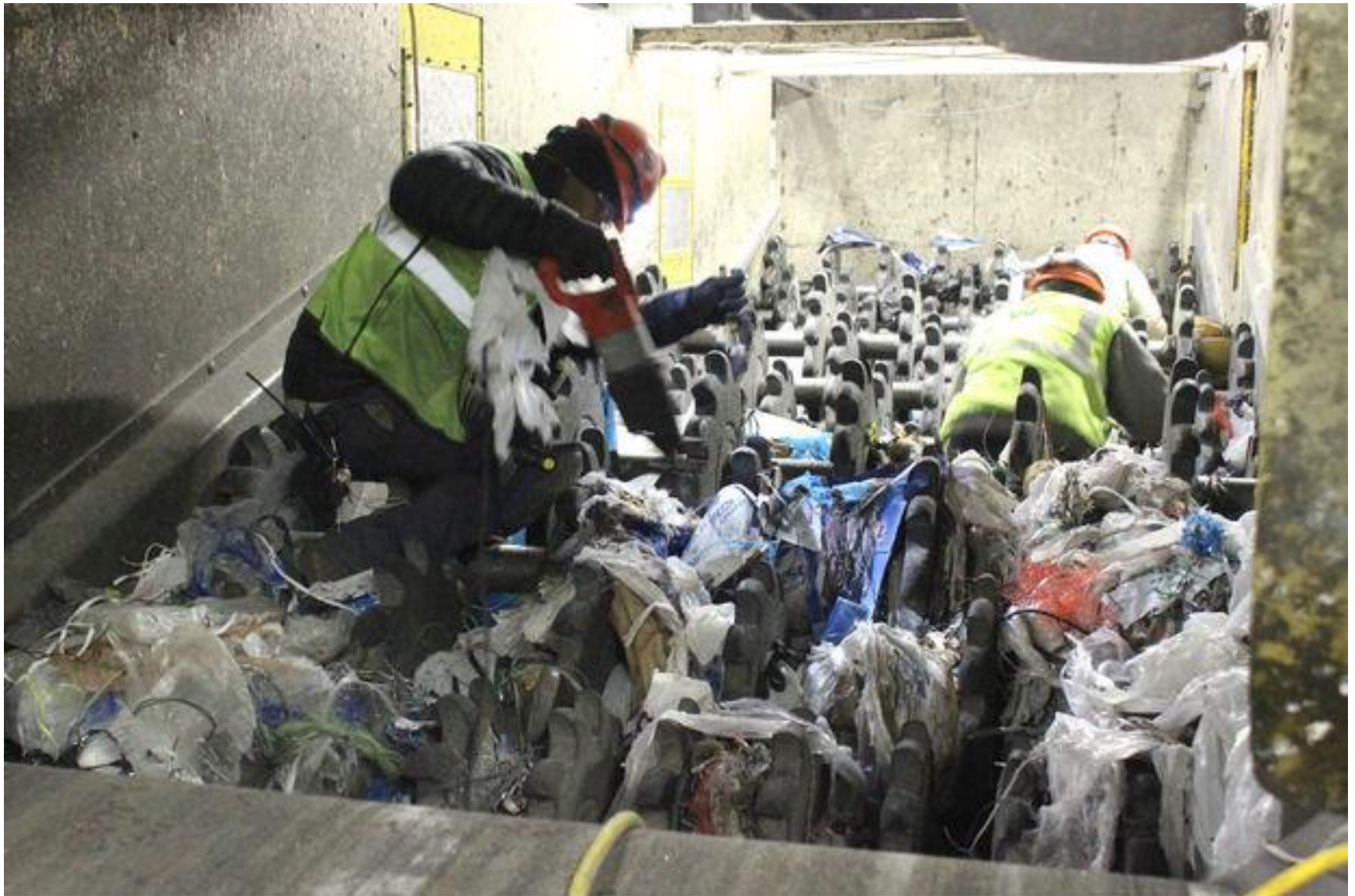
# Commercial compost







# Bags gum up recycling machines



# Drain clearing costs

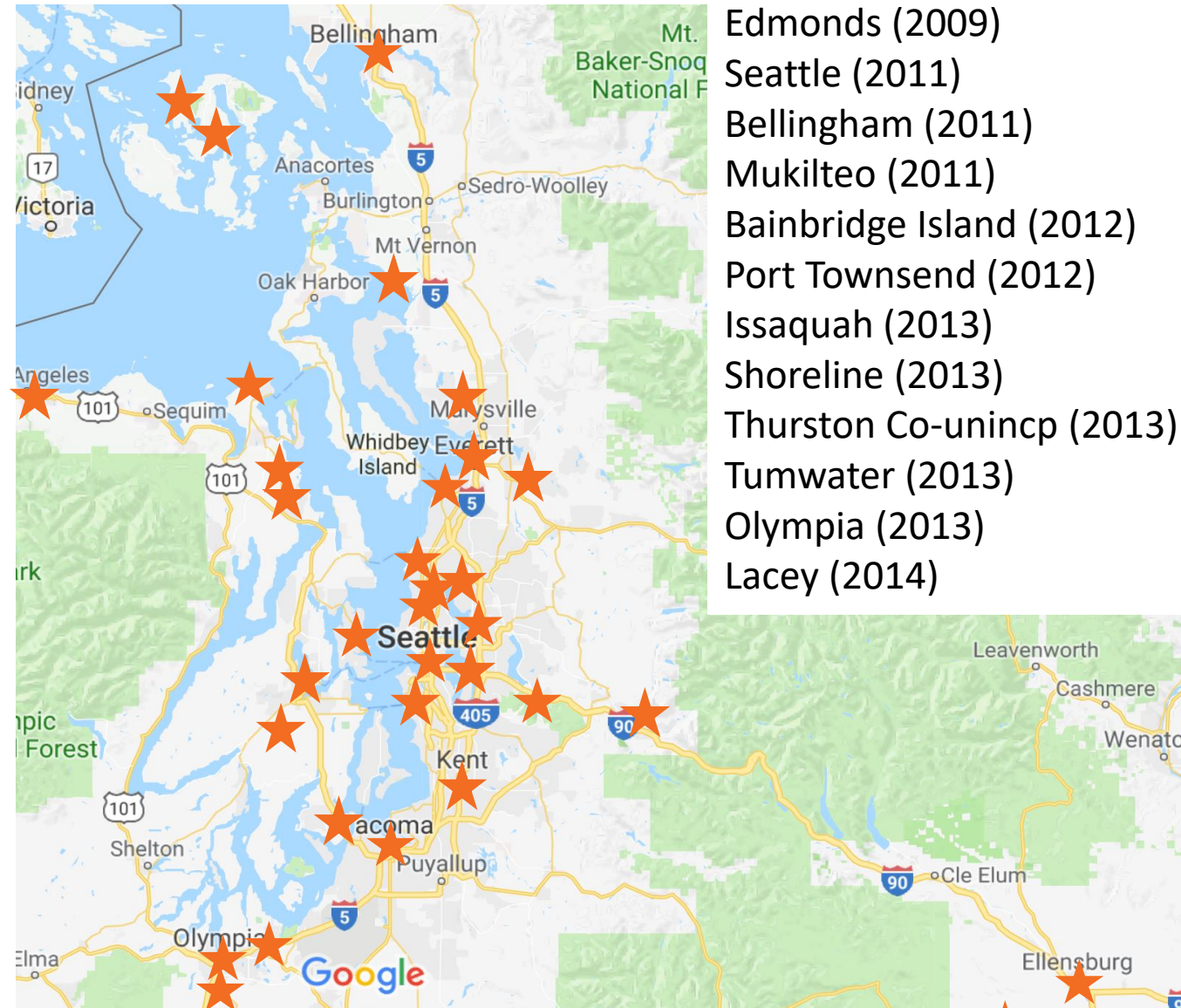


<http://www.littleelm.org/1265/Stormwater-Management>

# Ordinances



# 33 WA Reusable Bag Ordinances



- Edmonds (2009)
- Seattle (2011)
- Bellingham (2011)
- Mukilteo (2011)
- Bainbridge Island (2012)
- Port Townsend (2012)
- Issaquah (2013)
- Shoreline (2013)
- Thurston Co-unincp (2013)
- Tumwater (2013)
- Olympia (2013)
- Lacey (2014)
- Lake Forest Park (2018)
- Mercer Island (2014)
- Kirkland (2015)
- Ellensburg (2016)
- San Juan Co-unincp (2016)
- Tacoma (2016)
- Friday Harbor (2017)
- Quil Ceda Village (2017)
- Port Angeles (2018)
- La Conner (2018)
- Kenmore (2018)
- North Bend (2018)
- Everett (2018)
- Gig Harbor (2019)
- Burien (2019)
- Snohomish (2019)
- Bremerton (2019)
- Kitsap Co-unincp (2019)
- Port Orchard (2019)
- Kent (2019)
- Bingen (2019)

# No thin plastic carry-home bags



# 8 cent pass-through charge on paper bags and 2.25 mil plastic bags

- Store **keeps** the 8 cents



Goal: Bring  
your own bag



# EBT/WIC/TANF exempt

- Retailers cannot collect a pass-through charge from anyone with a voucher or electronic benefits card





# Exempts bags that address:

Bulk bags



Privacy



Newspaper



Produce



Dampness/  
contamination



Dry cleaning

