

Allentown Community & City of Tukwila PW

Monthly Coordination Meeting
Tukwila Community Center

May 24, 2022



Meeting Agenda

- 5:30pm** Welcome & Introductions
- 5:35pm** Review meeting agenda, Shared Goals and Guiding Principles
- 5:40pm** Truck Reroute EIS updates – Mark Hafs
- 6:05pm** Updates on traffic calming - Hari Ponnekanti
- 6:15pm** Stormwater Management Plan (SMAP) – overview and request for input
- 6:25pm** General questions and comments
- 6:30pm** Adjourn meeting



Shared Goals

- Work together to get the trucks out of the Allentown neighborhood
- Neighborhood receives timely, relevant information on the alternative access project
- Community members understand the process, next steps and timeline
- City is transparent throughout process
- Neighborhood has a regular opportunity to directly speak with City staff on the project; provide timely, relevant feedback
- Continue to forge relationships between community members and City staff to incorporate neighborhood feedback and understand neighborhood expectations
- Opportunity to provide information to neighborhood on other projects affecting Allentown



Guiding Principles

- Assume others are acting with good intent
- Be honest and transparent, but kind; empathize with others
- Step up and step back, depending on personality type
- Remain open-minded
- Respect differing views
- Learn from each other
- Think about who's not at the table
- Promote a culture of participation
- Once a decision is made, work towards shared goals



Truck Reroute EIS Update



Request For Proposal Published! – What's next?

- RFP advertised in local papers May 23, May 30
- Optional pre-submittal meeting June 6
- Deadline for questions June 9
- Proposal due June 13
- Review proposals June 14 – 22
- Notify short-listed consultants June 23
- Interview short-list consultants June 28 – 30
- Select consultant July 6
- Notice to proceed July 27

Clarifications

Mark's role in the EIS project

- Lead effort to hire consultant team
- Manage consultant team
- Review and revise consultant work
- Ensure compliance with NEPA, SEPA requirements
- Keep Allentown and project stakeholders informed

Clarifications

Consultant's role in the EIS project

- Provide expertise in engineering, environmental planning
- Provide technical expertise in project area resources that need to be considered as part of EIS
- Assist in public outreach

Studies on project Area Resources

Examples of technical studies considered in EISs

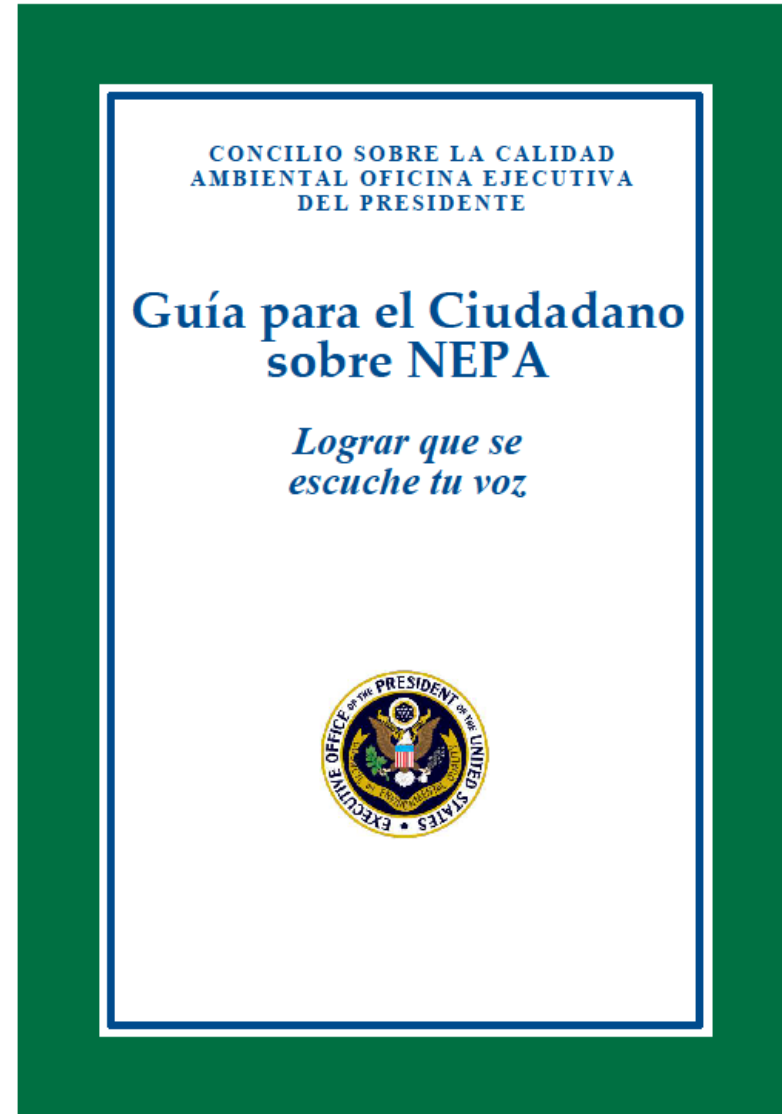
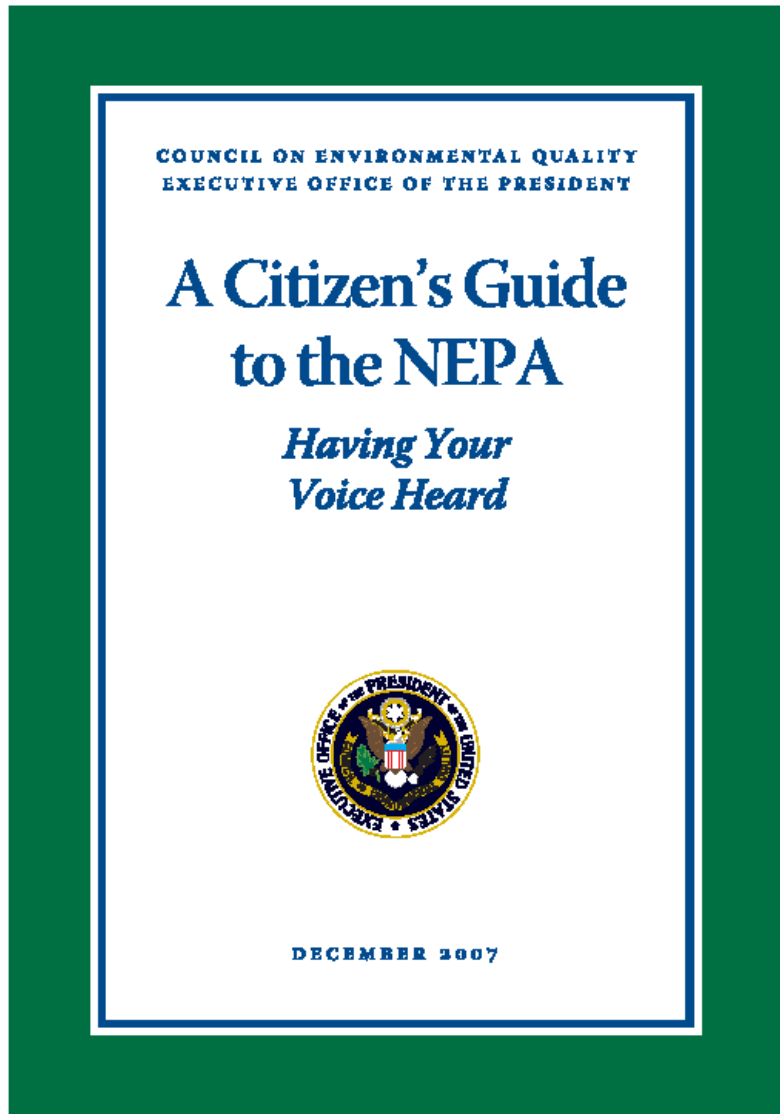
- Noise and vibration from traffic
- Air quality
- Water quality
- Fish and their habitat
- Native plant habitat
- Parks and trails
- Soil and geology
- Environmental justice
- Cultural resources

Early Public Input

Ideas for next Allentown meeting

- Less talk from City
- More input from Allentown residents, stakeholders
- Get info that our consultant can use
- Local expertise about existing conditions, community and stakeholder needs and expectations.

Public Input – Guidance



Public Input - Guidance

Table of Contents

Purpose of the Guide	1
History and Purpose of NEPA	2
Who is Responsible for Implementing NEPA?	2
To What do the Procedural Requirements of NEPA Apply?	4
When Does NEPA Apply?	5
Who Oversees the NEPA Process?	5
Navigating the NEPA Process	7
Implementing the NEPA Process	10
Categorical Exclusions (CE)	10
Environmental Assessments (EA)	11
Environmental Impact Statements (EIS)	13
Notice of Intent and Scoping	13
Draft EIS	16
Final EIS	18
Record of Decision (ROD)	19
Supplemental EIS	20
EPA's Review	21
When and How to Get Involved	21
It Depends on the Agency	21
Be Informed of Actions	23
Active Involvement	23
Other Processes that Require Public Involvement	25
How to Comment	27
What If Involvement Isn't Going Well?	28
Don't Wait Too Long	28
Contact the Agency	28

Traffic Calming Updates

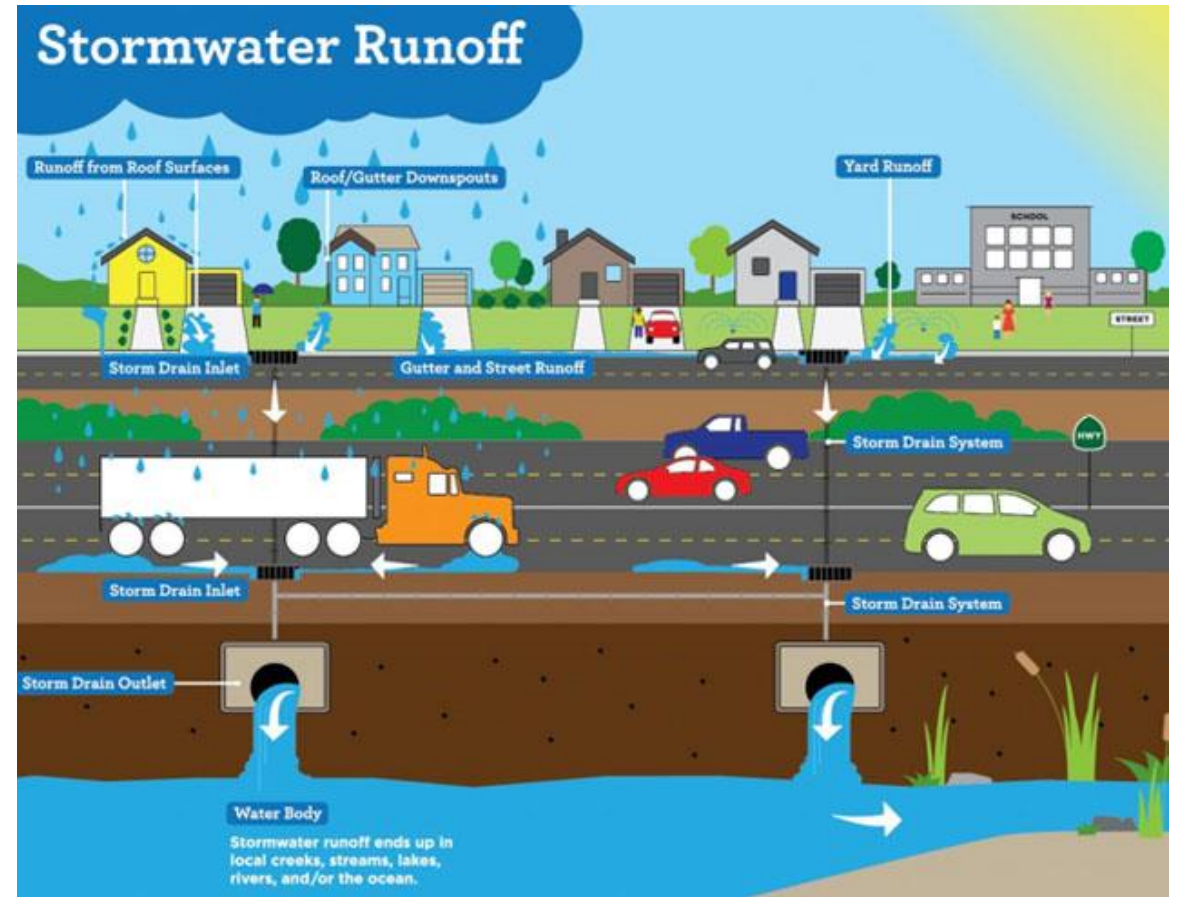


Stormwater Management Action Plan (SMAP)



SMAP – Strategic Plan to Address Stormwater Runoff

- How can we best address existing stormwater problems?
- How can we meet our future population targets while also protecting and improving conditions in our streams?



SMAP – Public Participation via Survey

- Selecting a stream
- Approach to improve water quality
- Survey link:
<http://www.aspectconsulting.com/TukwilaSMAP>

