

## FREQUENTLY ASKED QUESTIONS:

### How can community members be involved in this process?

Leave a scoping comment! The formal EIS scoping comment period is **February 14, 2023 to March 15, 2023**.

During this time, we invite you to share your input on what issues and alternatives we should analyze in the EIS. There are multiple ways to provide a comment:

**In-person** – Submit your comment in-person during today’s community meeting.

**Submit** an online comment form on our project website.

**Email** your comment to [AllentownTruckReRoute@TukwilaWA.gov](mailto:AllentownTruckReRoute@TukwilaWA.gov).

**Mail** your comment to Mark Hafs  
6300 Southcenter Blvd. Suite 200  
Tukwila, WA 98188

*Mailed comments must be postmarked by March 15, 2023*

### Can I submit more than one scoping comment?

Yes, submit your scoping comments between February 14, 2023 and March 15, 2023.

### Does the City of Tukwila have a preferred alternative to reroute traffic?

The City has no preferred option for alternative access to BNSF’s facility.

### Will we hear updates while the Draft EIS is being produced?

Yes, periodic updates will be issued via the project update email. You can join the project email list on our website. Scan the QR code on the front cover.

### Does the EIS only analyze current alternatives, or will new alternatives be considered?

Previously considered alternatives as well as new alternatives are up for consideration in the Draft EIS. Alternatives will be determined through a two-step scoping process. During the first scoping period, which will occur from February 14, 2023 to March 15, 2023, we are asking for input on ideas for alternatives to be considered in the EIS. A second scoping period, which is expected around May 2023, will request input on the proposed set of alternatives. Following the second scoping period, the final set of alternatives will be developed for inclusion in the Draft EIS.

### Are other agencies, like King County, Sound Transit, etc., notified about the scoping process?

The scoping notice has been advertised in the Seattle Times and published in the Washington State Environmental Policy Act (SEPA) Register. It has also been distributed to select agencies who might have an interest in the project.

### How is the Environmental Impact Statement (EIS) being funded?

City funds will cover the cost of the EIS.



# ALLENTOWN TRUCK REROUTE PROJECT ENVIRONMENTAL REVIEW PROCESS

## OVERVIEW

The City of Tukwila is preparing an Environmental Impact Statement (EIS) to evaluate alternatives to reroute existing BNSF truck traffic in Allentown

An EIS is a process to evaluate potential effects that a proposal may have on the built and natural environment. The first step in the EIS is called scoping. Scoping is where we ask you to share your input on what issues and alternatives should be analyzed in the EIS. Per State Environmental Protection Act (SEPA) guidelines, all formal comments must be **written and submitted within the formal scoping comment period**.



**The formal EIS scoping comment period is February 14th through March 15th. Here are ways you can provide input:**

## COMMENT OPTIONS



**In-person** – Submit your comment in-person during today’s community meeting.



**Submit** an online comment form on our project website.



**Email** your comment to [AllentownTruckReRoute@TukwilaWA.gov](mailto:AllentownTruckReRoute@TukwilaWA.gov).



**Mail** your comment to Mark Hafs  
6300 Southcenter Blvd. Suite 200,  
Tukwila, WA 98188

*Mailer comments must be postmarked by March 15, 2023*

**Scan QR code to learn more and leave a comment!**



## PURPOSE AND NEED

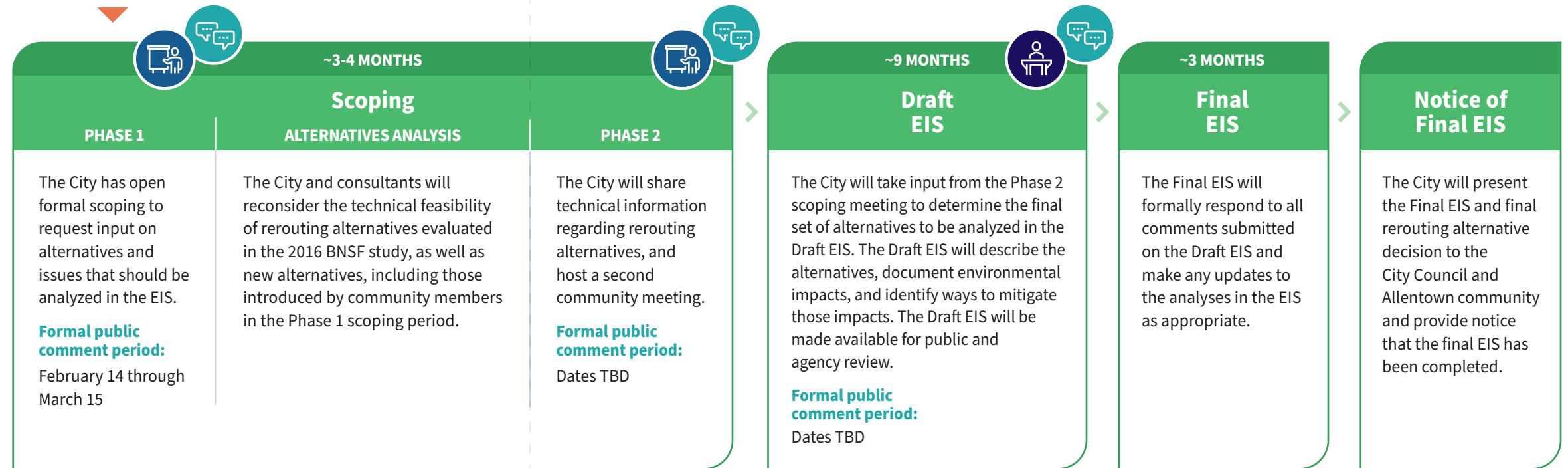
The purpose and need for this project is to develop an alternative route to the BNSF Intermodal Facility in Allentown to improve livability and safety in Allentown, without compromising the operations of the intermodal facility.

## PROJECT HISTORY

- BNSF's South Seattle Intermodal Facility is located on the east side of the Allentown neighborhood. For many years, trucks traveling to and from the BNSF facility have accessed it mainly via a route that uses 42nd Ave. S (over the 42nd Ave. S Bridge) and S 124th Street.
- In 2015, the City undertook a study to find a new truck route that would reduce the impacts of trucks in Allentown. The *BNSF Railway Intermodal Facility Access Study* was completed in late 2016.
- The study proposed four alternative truck routes that would not travel through Allentown, and one alternative that considered the impacts of leaving the current truck route in place.
- As part of the study, the City held open houses where the public gave input about the needs of the Allentown community and commented on the proposed truck route alternatives.
- Using the 2016 study as a starting point, the City will now prepare an environmental impact statement (EIS) which will take a more in-depth look at the truck route options identified in the 2016 study, and update the study's findings to include today's conditions, improved project understanding, and additional community input.
- Moving forward with work on the EIS, the City is committed to clear and open communication with the public – of its findings, its intentions, and its actions.

## EIS PROCESS

WE ARE HERE



## STUDY AREA



## TOPICS CURRENTLY BEING CONSIDERED

- ✓ **PHYSICAL ENVIRONMENT**  
*Climate, geology, soil type and distribution, groundwater characteristics, air quality, and noise levels*
- ✓ **BIOLOGICAL ENVIRONMENT**  
*Location and distribution of flora and fauna, wildlife characteristics*
- ✓ **SOCIO-ECONOMIC AND HEALTH CONDITIONS**  
*Demography, culture, heritage sites, social and health status of the people and their environment*

## WHAT MAKES A GOOD EIS COMMENT?

- Tell us about resources you'd like to protect and valuable sites in your community
- Be specific about issues and locations
- Write legibly
- All EIS comments must be written

All formal comments received during the formal comment period will be documented. The formal EIS scoping comment period is February 14, 2023 to March 15, 2023.

Share your input on what issues and alternatives should be analyzed in the EIS by March 15th.

